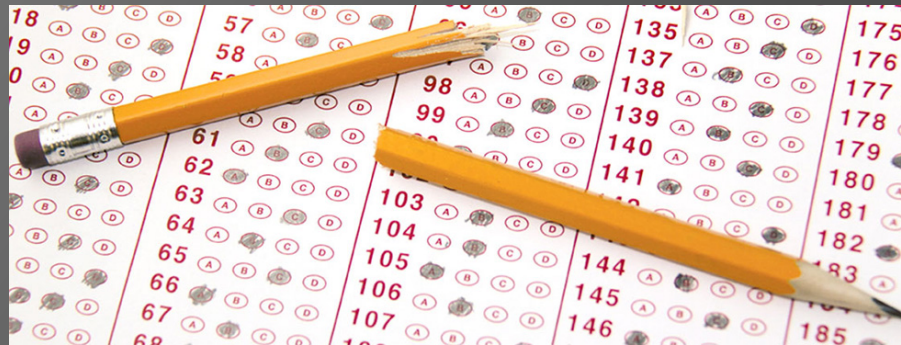


# Your presenters . . .

- ◎ Mary Honoré Tucker, University of Memphis
- ◎ Jennifer Carr, University of Nevada, Las Vegas William S. Boyd School of Law
- ◎ Greg Bordelon, Monmouth University



Why talk about the [bar exam here](#)?



**BRIDGING THE GAP  
BETWEEN  
PRE-LAW ADVISING AND  
THE BAR EXAM**

# Why do we care?

## How is this relevant to us?

- The vast majority of students whom we advise go to law school ultimately seeking licensure to practice law
  - A career not necessarily only “J.D. advantage” but “[bar passage required](#)”
  - We can use tools that show that where students are considering law schools may be related to where that law schools’ graduates sit for the bar exam
    - *E.g.*, Law School Transparency [Score Reports](#)

# What is the bar exam?

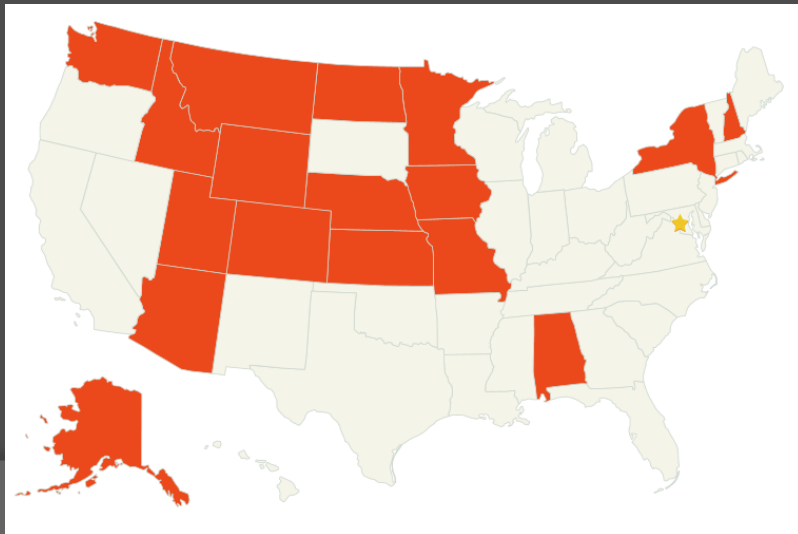
- Part of admission requirement to obtain a license to practice law in a jurisdiction
- Two or three successive days (except LA)
- Administered the last week of both February and July (except DE and sometimes ND, only July)
- Part objective/Part essay/Some skills-based
- Ethics/professional responsibility component included
  - Most jurisdictions (all except MD and WI) in form of 60-question MC test (MPRE)

# More on Format of the Bar Exam

- Objective component – Multistate Bar Exam (MBE) – administered last Wednesday of Feb. and July
  - Two three-hour sessions (AM/PM) of 100 multiple-choice questions each, testing on seven subjects
    - Civil Procedure, Constitutional Law, Contracts, Criminal Law & Procedure, Evidence, Real Property, Torts
- Essay component – State essays or Multistate Essay Exam (MEE) – administered last Tues. and/or Thurs. of Feb. & July
  - MEE (Tuesday) is six 30-minute essay questions
    - Business Associations, Conflict of Laws, Family Law, Trusts and Estates, Secured Transactions (UCC), and all seven subjects from the MBE (above)
  - State essays vary in time limitations and format. Some examples:
    - Georgia – four 45-minute essay questions (on Tuesday)
    - Texas – 40 short answer questions on state procedure & evidence (on Tuesday) AND twelve 30-minute essay questions (on Thursday)
    - Nevada – seven one-hour essay questions (on Tuesday & Thursday)

# More on Format of the Bar Exam (cont'd)

- ⦿ Skills-based – Multistate Performance Test ([MPT](#)) – administered last Tuesday of Feb. and July
  - One or two 90-minute *closed universe* [legal skills writing task\(s\)](#) – containing a File (Facts/Record) and a Library (Law)
- ⦿ Consolidated version of the MBE, MEE and MPT = Uniform Bar Exam ([UBE](#)) – 17 states as of 07/16 exam



# Impact of the Spread of the UBE

- ◎ Score (and market) portability
- ◎ Impact of large jurisdictions adopting it (e.g., New York)
- ◎ Factors to consider?
  - Bar exam relative difficulty
    - California's recent decision to go from three to two days.
  - Will this make students more mobile?
    - Where do most students sit for the bar?
    - Where do they go to look for jobs?
    - Is taking another exam currently an inhibitor to job selection?
  - Will this affect the number of admissions per state?

# Three types of law schools

- ⦿ National

- Harvard, Stanford, Yale, Columbia, etc

- ⦿ Regional

- University of Arizona, BYU, Boyd

- ⦿ State

- Cal-Western, CUNY, etc

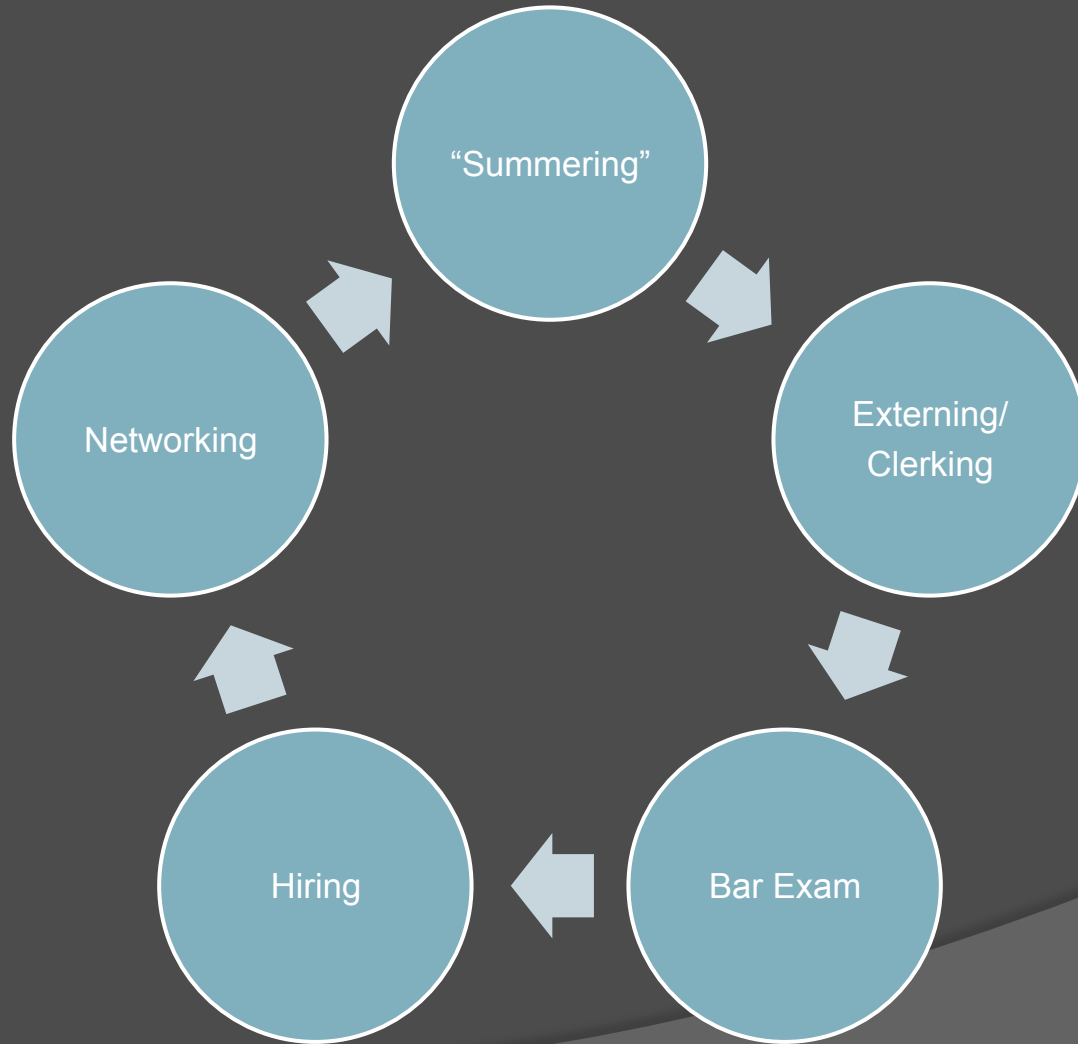


# Why It Matters

## ◎ “Thinking like a Lawyer”

- Purpose of law school isn't to teach “the law” but to teach how to “think like a lawyer.”
- Therefore, curriculum not limited to learning “the law” of a particular jurisdiction
  - But...if a law school knows where the majority of it's students will sit for the bar, it is likely tailor at least some time in class to that bar exam.
    - However, there is a persistent belief that bar prep is handled by commercial bar prep providers after law school.

# Why It Matters



# Why is this important for UNDERGRADUATES?

- ⦿ Advising Theory –
  - Intrusive advising
  - Developmental advising
- ⦿ Helping guide pre law students in terms of major and minor selection and particular course selection

# Where Applying v. Where Want to Practice

- ⦿ Millennial students have difficulty thinking for the long term.
- ⦿ Advisors can help them put some of the pieces in place.
  - Freshman Seminar

# Bar Passage Rate Information

- Provided by ABA
- <http://www.abarequireddisclosures.org/>
- Valuable resource to inform students of bar passage statistics.

# School Selection with the Bar Exam In Mind

## ⦿ Questions to ask:

- What are the student's long term career goals?
- Where does the student wish to practice?
- Where can the student gain admission?
- Where can the student gain admission and get scholarship money?
- What is the school's bar pass rate like?
  - The most pertinent data point here would be the school's first time bar pass rate as compared to the state's overall bar pass rate.

# School Selection with the Bar Exam in Mind

- ⦿ Schools may have an Academic Success or Support Program and/or a Bar Preparation program.
- ⦿ At some schools, the bar prep focus is school-wide, despite the focus on “learning to think like a lawyer.”
  - Students should consider what level of support they might need.
  - Students should examine a law school’s website, and potentially, contact the relevant faculty member(s) to ask about ASP/Bar Support.